



No 9

SWEATER
W/CABLESSweater w/cables and rev St-st
Instruction: Åsa Christiansen

Sizes:

(XS) S (M) L (XL) XXL

Measurements:

Bust: (83) 88 (98) 103 (110) 120 cm
Length: (59) 60 (61) 62 (63) 64 cm
Sleeve length: 47 cm, or suitable length

All measurements are for the finished garment = personal body measurements + movement allowance. The measurements are all according to given tension.

Yarn:

ALPAKKA SILKE (70 % baby alpaca, 30 % mulberry silk, 50 g = 200 m)
TYNN SILK MOHAIR (57 % mohair, 28 % silk, 15 % wool, 25 g = 212 m)

Yarn required:

ALPAKKA SILKE

Warm brown #3543: (3) 4 (4) 5 (5) 6 balls

TYNN SILK MOHAIR

Dusty brown #4062: (3) 4 (4) 4 (5) 5 balls

Suggested knitting needles:

Circular ndl 5.5 mm and 6 mm

Double pointed ndls 4.5 mm and 6 mm

Needle sizes are only suggestions. If your knitting shows tighter tension, use thicker needles, for looser tension use thinner needle.

Tension:

16 sts St-st with double yarn and 6 mm ndls = 10 cm

Reverse St-st (rev St-st):

P on RS, k on WS

Sweater is worked with double yarn: 1 strand ALPAKKA SILKE + 1 strand TYNN SILK MOHAIR

Back and front:

With double yarn and 5.5 mm circular ndl cast on (146) 154 (172) 180 (194) 212 sts. Join and work 5 cm ribbing k1, p1 in rnds.

Change to 6 mm circ ndl and k 1 rnd while **dec** (14) 14 (16) 16 (18) 20 sts

evenly spaced = (132) 140 (156) 164 (176) 192 sts.

Insert marker at sides with (66) 70 (78) 82 (88) 96 sts for each part.

Work **diagram** over the 16 center front sts (= 20 sts after first rnd) and rev St-st over rem sts.

Cont in this order until work meas 39 cm.

Cast off 6 sts at each side for armholes (= 3 sts at each side of markers).

Put garment aside and work sleeves.

Sleeves:

With double yarn and 4.5 mm double pointed ndls cast on (30) 32 (34) 36 (38) 40 sts. Join and work 5 cm ribbing k1, p1 in rnds.

Insert marker between first and last st on rnd.

Change to 6 mm double pointed ndls, work 1 rnd rev St-st while **inc** (20) 20 (20) 22 (22) 22 sts evenly spaced = (50) 52 (54) 58 (60) 62 sts.

Cont rev St-st until work meas 47 cm, or suitable length.

Cast off 6 sts at center underarm (= 3 sts at each side of marker).

Put garment aside and work sleeves.

Raglan:

Transfer sleeve sts to the circular 6 mm garment ndl, placing one sleeve above each armhole cast-off = (212) 224 (244) 260 (276) 296 sts.

Insert marker at each junction.

Rnd beg at right side marker on the back.

Cont as before, and dec for raglan at each marker as follows: *k2tog, work until 2 sts before next marker, k2tog tbl*, rep from *-* in the rnd = 8 sts dec. dec for raglan in this manner on alt rnds (12) 13 (14) 16 (17) 18 times = (116) 120 (132) 132 (140) 152 sts.

Cont raglan dec as before, **at the same time** cast off for neck as follows:

Cast off 4 sts over sts for the cables at center front, by k2tog 4 times in the same manner as inc at beg of diagram.

Next row: Cast off the 16 center front sts for neck. Work to end of rnd. Cut yarn, row beg at neck.

NOTE: Dec for raglan on RS rows only.

Cont dec for raglan 6 times more, **at the same time** cast off for neck 2 sts at beg of every row.

Cast off.

Finishing:

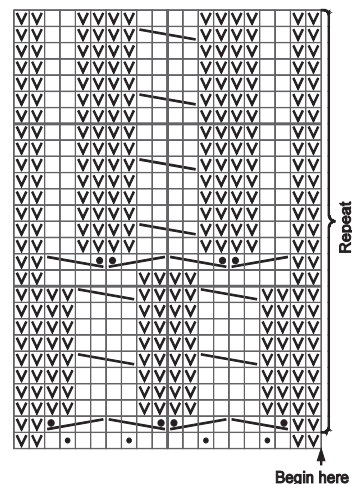
Neckband:

With double yarn and 5.5 mm circular ndl pick up and knit 1 st every st/row, but skip every 4th st/row at neck edge to approx (90) 92 (94) 96 (98) 100 sts. Number of sts a multiple of 2.

Work 3 cm ribbing k1, p1 in rnds.

Cast off rib-wise.

Sew underarm openings.



□ K on RS, p on WS

✓ P on RS, k on WS

◻ Inc 1 st

Transfer 2 sts to a spare ndl and hold in front, k2, k sts from spare ndl

Transfer 2 sts to a spare ndl and hold in back, k2, p sts from spare ndl

Transfer 2 sts to a spare ndl and hold in front, p2, k sts from spare ndl