





No 1

BUTTERFLY SWEATER

*Sweater with lace pattern
Instruction: Anita Brathetland*

This sweater looks beautiful from both right side and wrong side. Before start knitting make your choice for which side you want as the right side of your sweater, and fasten all yarn ends on the other side, wrong side. This photo shows sweater with right side facing, photo in booklet shows sweater with wrong side facing.

Sizes:
(S) M (L) XL (XXL)

Measurements:
Bust: (101) 107 (113) 119 (125) cm
Length: approx (56) 57 (59) 61 (62) cm
Sleeve length: 47 cm, or suitable length
All measurements are for the finished garment = personal body measurements + movement allowance. The measurements are all according to given tension.

Yarn:
ALPAKKA SILKE (70 % baby alpaca, 30 % mulberry silk, 50 g = 200 m)
SILK MOHAIR (60 % kid mohair, 15 % wool, 25 % silk, 50 g = 280 m)

Yarn required:
ALPAKKA SILKE
Baby blue #6011: (5) 6 (7) 8 (9) balls
SILK MOHAIR
Dusty pastel blue #7521: (3) 4 (4) 5 (5) balls

Suggested knitting needles:
Circular and double pointed ndls
3.5 mm and 4 mm
Needle sizes are only suggestions. If your knitting shows tighter tension, use thicker needles, for looser tension use thinner needle

Tension:
20 sts x 29 rnds St-st with 4 mm ndls
= 10 x 10 cm

Reverse St-st (rev St-st):
P on RS, k on WS.

Work entire garment with double yarn = 1 strand ALPAKKA SILKE + 1 strand SILK MOHAIR

Back and front:

With double yarn and 3.5 mm circular ndl cast on (202) 214 (226) 238 (250) sts. Join and work 4 cm ribbing k1, p1 in rnds.

Change to 4 mm circular ndl. Insert marker at sides with (101) 107 (113) 119 (125) sts for each part Work (30) 33 (36) 39 (42) sts rev St-st, then diagram **A**, work rev St-st to end of rnd.

Cont to work in this order until garment meas approx 35 cm.

Cast off 8 sts at each side for armholes (= 4 sts at each side of markers).

Put garment aside and work sleeves

Sleeves:

With double yarn and 3.5 mm double pointed ndls cast on (30) 32 (34) 36 (38) sts. Join and work 4 cm ribbing k1, p1 in rnds.

Change to 4 mm circular ndl, k 1 rnd while **inc** (39) 41 (43) 47 (49) sts evenly spaced = (69) 73 (77) 83 (87) sts.

TIPS: Inc: Pick up strand between 2 sts and k tbl this new st, or k1, k1 tbl in same st.

Work (24) 26 (28) 31 (33) sts in rev St-st, work diagram **B**, work rev St-st to end of rnd.

Cont in this order until sleeve meas 47 cm or suitable length.

Cast off 8 center underarm sts.

Put aside and work other sleeve the same.

Raglan:

Transfer sleeve sts to the circular 4 mm garment ndl, placing one sleeve above each armhole cast-off = (308) 328 (348) 372 (392) sts.

Insert marker at each junction.

Rnd beg at junction on right side of the back.

Dec for raglan as follows:

*sl 1, k1, pssso, work rev St-st and **diagram** as before until 2 sts before marker, k2tog, work rev St-st and **diagram** as before until next marker*, rep from *-* in the rnd = 4 sts dec over sts for front and back only.

Next rnd: k all dec-sts.

Rep dec on alt rnds until 3 times = (296) 316 (336) 360 (380) sts.

Insert new marker on the k-sts at each junction = 4 markers.

Cont rev St-st and **diagram** as before and dec raglan at each marker as follows:

Work until 1 st before marker, sl 2
k-wise [as working k2tog], k1, pssso =
8 sts dec.

Rep dec on alt rnds (13) 15 (17) 20
(22) times = (192) 196 (200) 200
(204) sts.

Transfer the 21 center front sts to a
spare ndl for neck. Cut yarn and beg
again at neck.

Cont back and forth and cast off at
neck on alt rows 2 sts 3 times, 1 st 4
times, **at the same time** cont raglan
dec 7 times more as before where this
is possible until (23) 25 (27) 30 (32)
times of dec are finished over sts for
the back.

NOTE: All raglan dec on RS rows.
Leave rem sts on ndl for neckband.

Finishing:

Sew underarm openings.

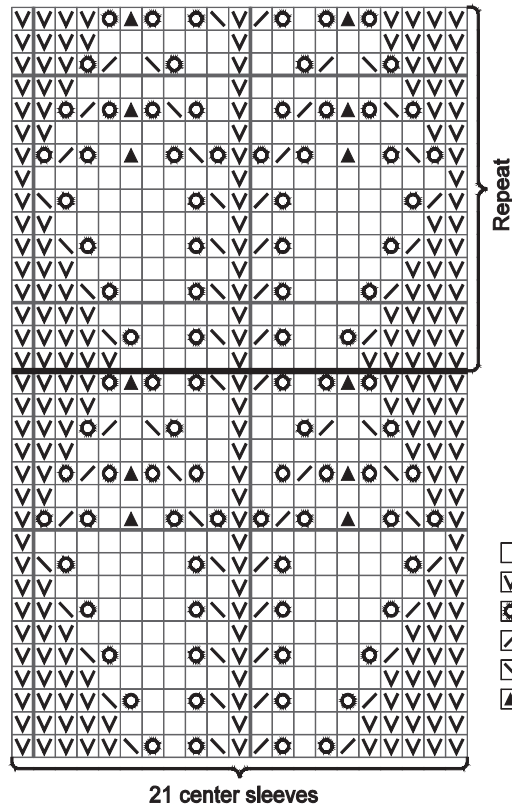
Neckband:

Transfer sts from ndls at neck to
3.5 mm circ ndl.

Join and work 1 rnd St-st and adjust
number of sts to (108) 110 (112) 114
(116).

Work 4 cm ribbing k1, p1 in rnds. Cast
off.

B



- K on RS, p on WS
- ◻ P on RS, k on WS
- ◻ 1 yo
- ◻ k2tog
- ◻ Sl 1, k1, pssso
- ◻ Sl 2 k-wise (as working k2tog), k1, pssso

A

