



No 18

SNOWFLAKE CHRISTMAS STOCKING

Christmas stocking w/snowflake
Instruction: Olaug Beate Bjelland

Measurement:

Approx 48 x 30 cm

Yarn:

FRITIDSGARN (100 % Norwegian wool, 50 g = 70 m)

Yarn required:

Natural #1012: 3 balls

Red melange #4236: 1 ball

Suggested knitting needles:

Small circular and double pointed 5.5 mm

Needle sizes are only suggestions. If your knitting shows tighter tension, use thicker needles, for looser tension use thinner needle.

Tension:

15 sts St-st with 5.5 mm ndls = 10 cm

With natural and 5.5 circ ndl cast on loosely 48 sts. Join and p 1 rnd, work **diagram** in St-st, then p 1 rnd with natural (= folding rnd).

All further measurements from this rnd.

Turn work inside out and cont with natural and St-st until work meas approx 38 cm.

Heel:

Work heel back and forth in St-st over the 12 first and 12 last sts on rnd as follows:

Work until 1 st rem at one side, turn and work until 1 st rem at other side. Turn and work 1 st less at each side every row, **at the same time** sl first st p-wise on WS, and sl first st k-wise on RS (making ch st edge). Cont in this manner until 8 sts rem at center of row. Heel is now half finished.

Turn and work 1 st more each row. To avoid holes in work, pick up yarn between the 2 last sts, and work this new st tog with next st. Cont in this manner until all 24 sts are worked.

Work 1 rnd over all sts (rnd beg at back).

Cont St-st 13 cm from after the heel.

Toe dec:

Insert marker at each side.

Dec for toes as follows: *work until 3 sts before marker, k2tog tbl, k2, k2tog*, rep from *-* = 4 sts dec.

Change to 5.5 mm double pointed ndls and rep dec on alt rnds twice, then on every rnd until 8 sts rem.

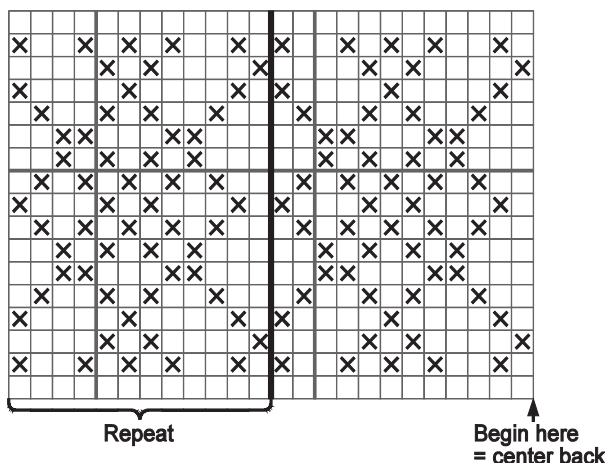
Pull yarn through sts, gather and fasten well on WS.

Fold pattern to RS.

With natural and double yarn twist a cord approx 150 cm long. With natural make 2 pompoms, approx 6 cm diameter.

Fasten one at each end of cord.

Fasten cord by pulling it through a stitch at upper edge of center back on stocking. Make a loop for hanging and tie a bow.



- ☐ Natural
☒ Red mélange