



No 17

# SNOWFLAKE CUSHION

*Snowflake cushion*

*Instruction: Olaug Beate Bjelland*

**Measurements:**

Approx 65 x 65 cm

**Yarn:**

TYKK ULL (100% Norwegian wool,  
50 g = 35 m)

**Yarn required:**

Natural #1012: 14 balls  
Dk.grey melange #1055: 1 ball

**Notions:**

Inner cushion: 65 x 65 cm

**Suggested knitting needles:**

Circular 10 mm

Needle sizes are only suggestions. If your knitting shows tighter tension, use thicker needles, for looser tension use thinner needle.

**Tension:**

9 sts St-st with 10 mm ndls = 10 cm

**Back and front:**

With natural cast on 122 sts. Join and work St-st in rnds until cushion meas approx 65 cm.

Cast off loosely.

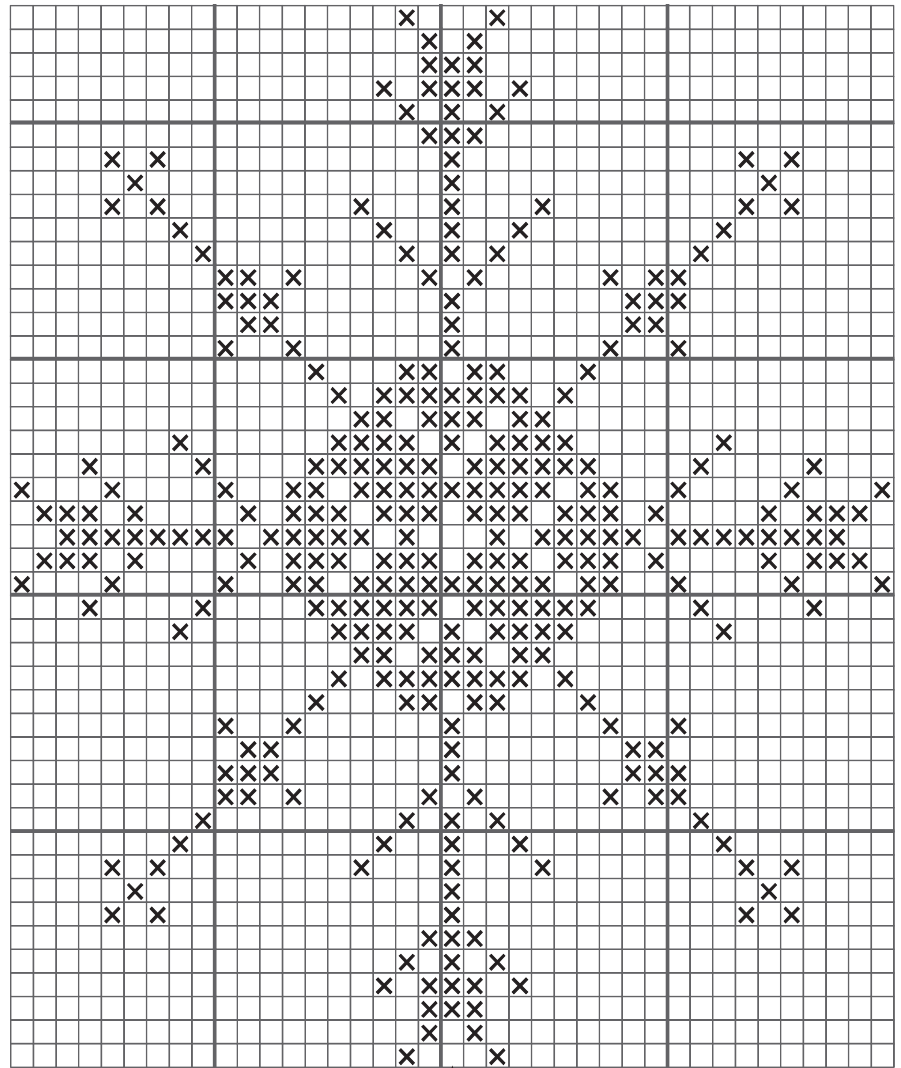
**Finishing:**

Fold and sew seam at bottom of cushion = 61 sts for each part.

**Snowflake:**

Count to center front st and insert marker. With dk.grey melange embroider knit sts according to **diagram**.

Put inner cushion inside and sew seam at top with hidden sts.



Center front

- Natural
- Dk. charcoal

**Knit sts**

