



No 2

EVA

Sweater w/round yoke
Instruction: Sandnes Garn

Sizes:
(2) 4 (6) 8 (10) 12 yrs

Measurements:
Chest width: (62) 67 (70) 74 (79) 85 cm
Length: (36) 40 (44) 48 (52) 54 cm
Sleeve length, underarm: (23) 26 (29) 32 (35) 40 cm or suitable length
All measurements are for the finished garment = personal body measurements + movement allowance. The measurements are all according to given tension

Yarn:
SMART (100 % wool, superwash, 50 g = 100 m)

Alternative yarn:
PEER GYNT, ALPAKKA, DUO, MANDARIN MEDI, MERINOULL, SPØT
Note: If alternative yarn is chosen be sure to check the yardage on label. The image of garment might change by using alternate yarn.

Yarn required:
Lt.sea-green #7721: (5) 6 (7) 8 (9) 10 balls
Wine #4363: (1) 1 (1) 1 (1) 2 balls
Terracotta melange #3846: 1 ball all sizes
Green #8215: 1 ball all sizes

Suggested knitting needles:
Circular and double pointed ndls 3 mm and 3.5 mm
Needle sizes are only suggestions. If your knitting shows tighter tension, use thicker needles, for looser tension use thinner needle

Tension:
22 sts St-st with 3.5 mm ndls = 10 cm

Sweater is worked from neck down.

Yoke:
With Lt.sea-green and 3 mm circular ndl cast on (84) 88 (92) 96 (100) 104 sts. Join and work (10) 10 (12) 12 (14) 14 cm ribbing k1, p1 in rnds. Change to 3.5 mm circ ndl. Work **diagram** and inc as shown = (200) 220 (230) 250 (270) 290 sts.
With Lt.sea-green work (0) 2 (4) 8 (10) 14 rnds.

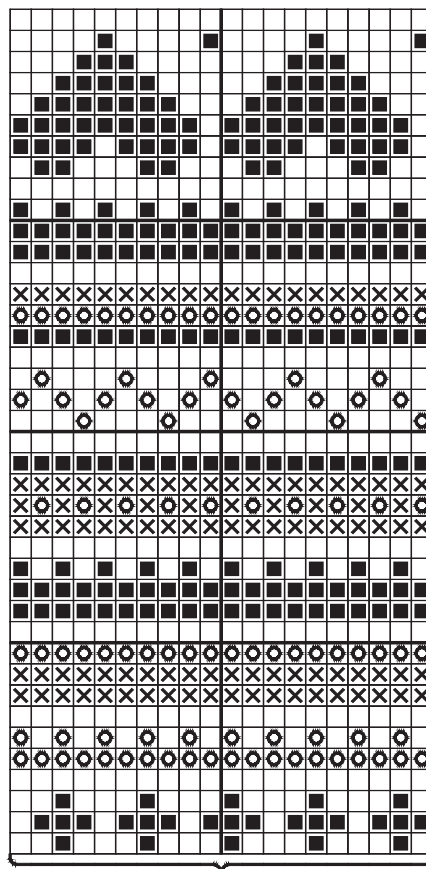
Divide work as follows:
Work (60) 66 (69) 73 (79) 85 sts [= the back], transfer (40) 44 (46) 52 (56) 60 sts for sleeve to a spare ndl, cast on 8 sts [= underarm], work (60) 66 (69) 73 (79) 85 sts [= front], transfer (40) 44 (46) 52 (56) 60 sts for sleeve to a spare ndl, cast on 8 sts [= underarm].

Back and front:
= (136) 148 (154) 162 (174) 186 sts.
All further measurements from this rnd.
Cont St-st in rnds until work meas (18) 22 (25) 28 (31) 32 cm.
Change to 3 mm circ ndl and work 4 cm ribbing k1, p1 in rnds. Cast off rib-wise.

Sleeves:
Transfer sleeve sts to 3.5 mm double pointed ndls and cast on 8 underarm sts = (48) 52 (54) 60 (64) 68 sts. Insert marker at center underarm.
Work St-st in rnds and dec 1 st at each side of marker approx every (3) 3 (3) 2,5 (2,5) 2,5 cm until (36) 38 (40) 40 (42) 42 sts rem.
Cont until selevel meas (19) 22 (25) 28 (31) 36 cm, or 4 cm before suitable length.

Change to 3 mm double pointed ndls and work 4 cm ribbing k1, p1 in rnds. Cast off rib-wise.
Work other sleeve in the same manner.

Finishing:
Sew underarm openings.



- ⊕ Lt.sea-green
- ⊗ Terracotta melange
- ⊙ Green
- Wine

← Inc (18)20(20)24(28)32 sts evenly spaced = (200)220(230)250(270)290 sts

← Inc (18)20(22)26(30)34 sts evenly spaced = (182)200(210)226(242)258 sts

← Inc (24)28(30)34(36)40 sts evenly spaced = (164)180(188)200(212)224 sts

← Inc (28)32(32)34(38)40 sts evenly spaced = (140)152(158)166(176)184 sts

← Inc (28)32(34)36(38)40 sts evenly spaced = (112)120(126)132(138)144 sts

Repeat Begin here

