

VIVIL SWEATER

SADNES GARN

THE NORWEGIAN
YARN FACTORY
SINCE 1888



VIVIL SWEATER

SWEATER W/ROUND YOKE / INSTRUCTION: ANITA BRATHETLAND

SIZES

(XS) S (M) L (XL) XXL (XXXL)

MEASUREMENTS

Bust: (88) 94 (101) 108 (116) 124 (129) cm
Length: approx (54) 54 (56) 58 (60) 62 (62) cm
Sleeve length: 51 cm, or suitable length
All measurements are for the finished garment = personal body measurements + movement allowance. The measurements are all according to given tension.

YARN

SISU (80 % wool, 20 % nylon, 50 g = 175 m)
TYNN SILK MOHAIR (57 % mohair, 28 % silk, 15 % wool, 25 g = 212 m)

YARN REQUIRED

SISU
Dusty lilac #4621: (5) 6 (7) 8 (9) 10 (11) balls
TYNN SILK MOHAIR
Dusty lilac #4631: (4) 5 (5) 6 (6) 7 (7) balls

SUGGESTED KNITTING NEEDLES

Circular and double pointed 4.5 mm and 5 mm
Needle sizes are only suggestions. If your knitting shows tighter tension, use thicker needles, for looser tension use thinner needle

TENSION

19 sts St-st with double yarn (1 strand SISU + 1 strand TYNN SILK MOHAIR) and 5 mm ndls = 10 cm

GSR = GERMAN SHORT ROWS

After each turning, always slide first st p-wise, lead yarn over right ndl, pull yarn firmly at the back until 2 loops on ndl.
The 2 loops count as 1 stitch.
When working row/rnd with loops, k loops tog to 1 stitch.

WORK GARMENT WITH DOUBLE YARN, 1 STRAND SISU + 1 STRAND TYNN SILK MOHAIR

BACK AND FRONT

With double yarn and 4.5 mm circular ndl cast on (168) 176 (192) 204 (220) 236 (244) sts. Join and work 5 cm ribbing k2, 2 in rnds. Change to 5 mm circular ndl, k 1 rnd while adjusting number of sts to (168) 178 (192) 206 (220) 236 (246). Insert marker at each side with (84) 90 (96) 104 (110) 118 (124) sts for front and (84) 88 (96) 102 (110) 118 (122) sts for the back. Cont St-st until garment meas (31) 31 (33) 35

(37) 39 (39) cm.

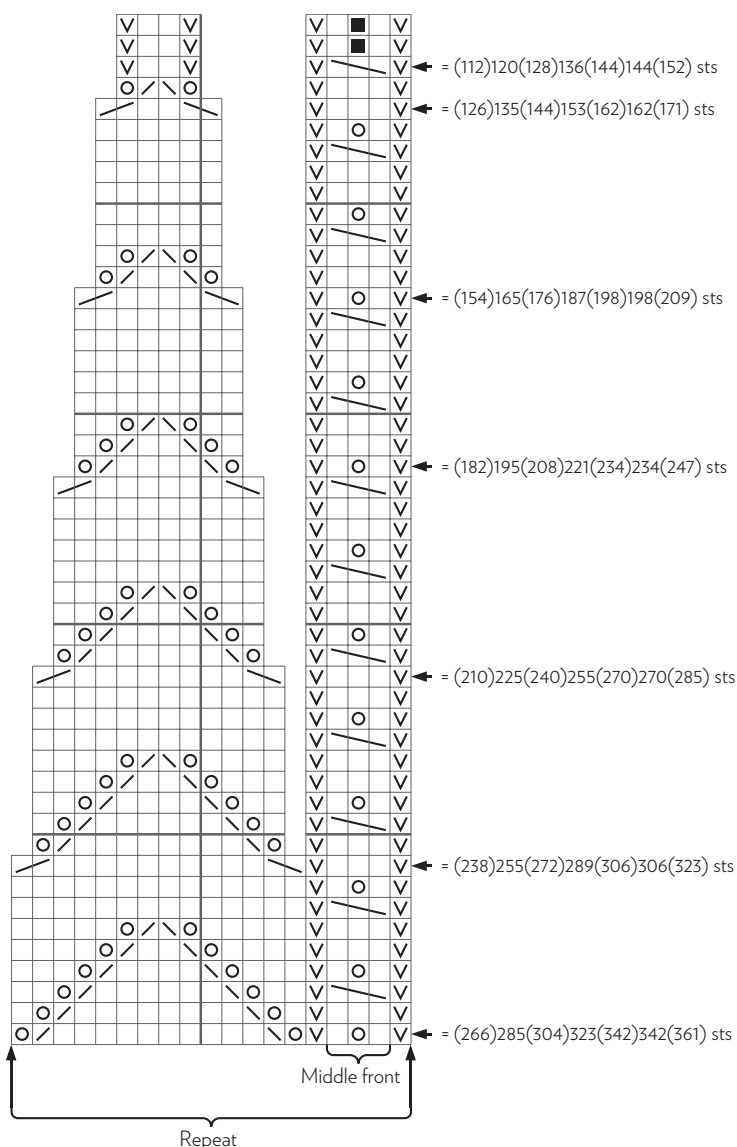
Cast off (10) 10 (10) 10 (10) 14 (14) sts at each side for armholes (= (5) 5 (5) 5 (5) 7 (7) sts at each side of markers).

Put garment aside and work sleeves.

SLEEVES

With double yarn and 4.5 double pointed ndls cast on (32) 36 (36) 36 (36) 40 (40) sts. Join and work 5 cm ribbing k2, p2 in rnds. Change to 5 mm double pointed ndls, k 1 rnd while inc (30) 30 (32) 34 (36) 32 (36) sts evenly spaced = (62) 66 (68) 70 (72) 72 (76) sts. Insert marker at middle underarm.

- ☐ k
- ☒ p
- ☒ 1 yo
- ☒ sl 1 st k-wise and transfer st k tbl back to left ndl, k2tog tbl
- ☒ k2tog
- ☒ sl 1 st k-wise, k2, pass sl st over the 2 k stt
- ☒ sl 1 st k-wise and transfer st k tbl on left ndl, k2tog tbl
- ☒ k2tog
- ☒ no stitch, work next symbol



Cont until sleeve meas 51 cm, or suitable length.
Cast off (10) 10 (10) 10 (10) 14 (14) sts at middle underarm (= (5) 5 (5) 5 (5) 7 (7) sts at each side of marker).
Put aside and work other sleeve the same.

ROUND YOKE

Transfer sleeve sts to the circular 5 mm garment ndl, placing one sleeve above each armhole cast-off = (252) 270 (288) 306 (324) 324 (342) sts.
Insert marker around 2 sts at middle front.
Rnd beg at a junction on the back.
Work extra height at back with GSR (as explained) as follows:
Work until 10 sts rem before middle front marker, turn and work until 10 sts before middle front marker at other side, cont to turn and work until 10 sts before previous turning until a total of 5 turnings at each side.
Work 1 rnd St-st over all sts, at the same time work loops tog.
Count from middle front to establish beg of diagram and if necessary move beg of rnd a few sts to start with a full diagram.
Work diagram and dec as shown = (112) 120 (128) 136 (144) 144 (152) sts.
Leave sts on ndl for neck.

FINISHING

Sew underarm openings.

NECKBAND

Change to 4.5 mm circular ndl and work 2 cm ribbing over sts as they appear.
Work p2tog at each p section in the rnd = (84) 90 (96) 102 (108) 108 (114) sts.
Work until ribbing meas 4 cm.
Cast off rib-wise.
OBS: If neckband seems too wide for the largest sizes, k2tog at some of the k st sections, at the same time cast off.

