

©RRECTION 2410

NR 2 MARIUS LADIES SWEATER, TOP DOWN LEFT SIDE FRONT

Work 1 row p inside 1 edge st on each side.

Work diagram C and cast on 1 st 5 times, 2 sts twice, 3 sts once at end of WS rows as shown in diagram = (45) 47 (49) 51 (53) 55 (57) 59 sts.

RIGHT SIDE FRONT

Work 1 row p inside 1 edge st on each side.

Work diagram D and cast on 1 st 5 times, 2 sts twice, 3 sts once at end of every RS row as shown in diagram = (45) 47 (49) 51 (53) 55 (57) 59 sts.

FRONT

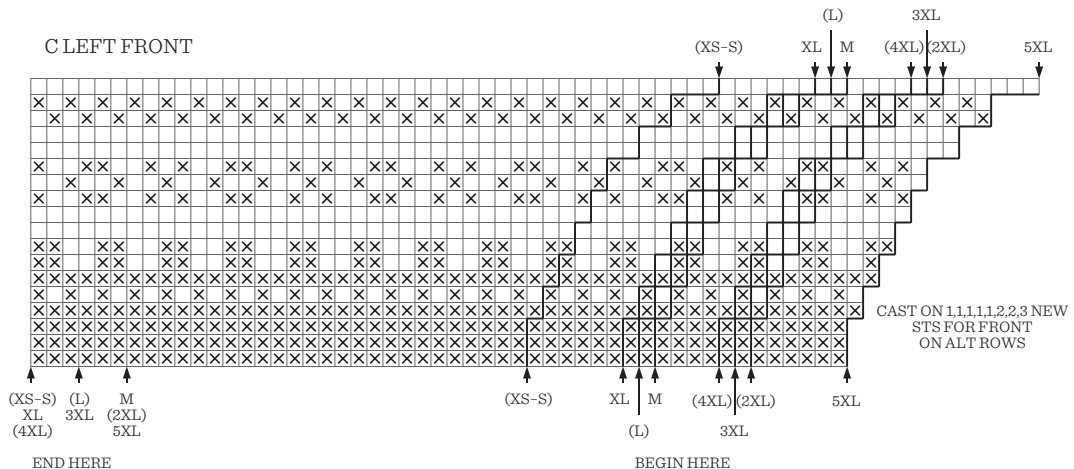
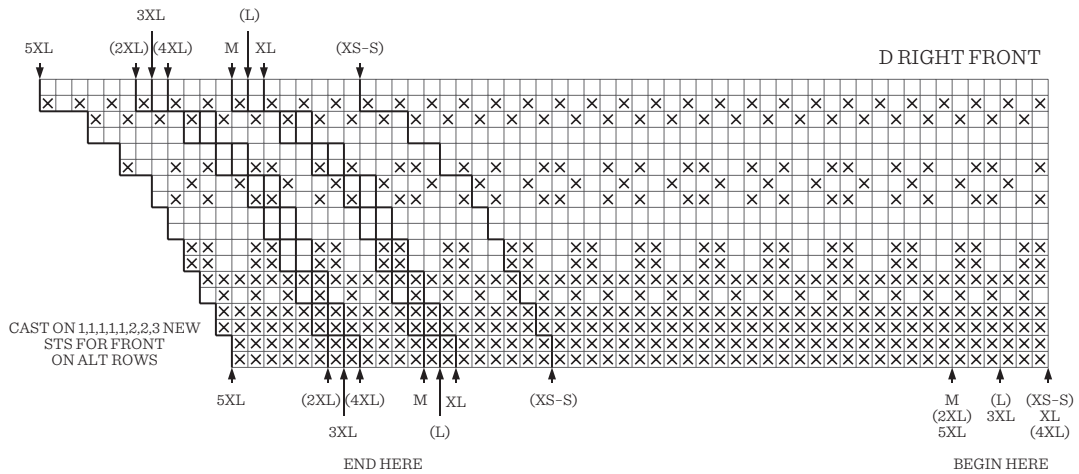
Cont to work back and forth from 10th row in diagram B, inside 1 edge st on each side.

NR 2 MARIUS LADIES SWEATER, BOTTOM UP FRONT

Work in same manner as the back until 8 rows of diagram A rem.

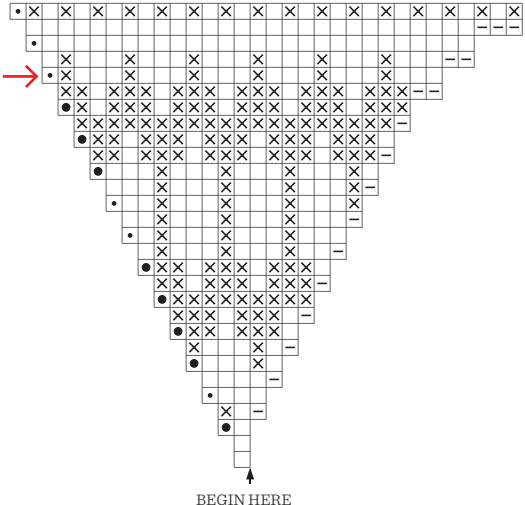
RIGHT SIDE

Note! When diagram A is finished, continue with diagram B. Dec for neck continues in diagram B.



NR 4 KLEIVA LADIES SWEATER

LEFT FRONT (XS)S(M)



NR 5 KLEIVA SWEATER FOR MEN

LEFT FRONT (S)M(L)

