



No 3

SWEATER W/SPROUT PATTERN

Raglan sweater worked from neck down

Instruction: Olaug Beate Bjelland

Sizes:

(XS-S) M (L) XL (XXL) XXXL

Measurements:

Bust: approx (88) 96 (104) 112 (120) 128 cm

Length: approx (55) 56 (57) 58 (60) 62 cm, or suitable length

Sleeve length: approx 48 cm, or suitable length

All measurements are for the finished garment = personal body measurements + movement allowance. The measurements are all according to given tension.

Yarn:

ALPAKKA SILKE (70 % baby alpaca, 30 % mulberry silk, 50 g = 200 m)
SILK MOHAIR (60 % kid mohair, 15 % wool, 25 % silk, 50 g = 280 m)

Yarn required:

ALPAKKA SILKE

Lt.grey melange #1042: (5) 5 (6) 7 (7) 8 balls

SILK MOHAIR

Lt.grey melange #1022: (3) 3 (3) 150 (3) 4 balls

Suggested knitting needles:

Circular 3.5 mm and 4 mm

Small 4 mm circular for sleeves

Double pointed and small circular 3.5 mm

Needle sizes are only suggestions. If your knitting shows tighter tension, use thicker needles, for looser tension use thinner needle

Tension:

20 sts and 33 rnds diagram with double yarn and 4 mm ndls = 10x10 cm

GSR = German Short Rows:

After each turning always sl first st p-wise off ndl, lead yarn over right ndl, pull yarn firmly on the back until 2 loops on ndl.

The 2 loops count as one stitch.

When working rows/rnds with loops, work loops tog to 1 st.

Inc right: Pick up yarn for new st before marker, transfer st k tbl to left ndl and k new st.

Inc left: Pick up yarn for new st after marker, transfer st k-wise to left ndl and k tbl the new st.

INFO:

Work garment with double yarn (= 1 strand ALPAKKA SILKE + 1 strand SILK MOHAIR). Beg at neck, work down and inc for raglan.

When neckband is finished, turn work inside out with RS of St-st for RS of work. Work short rows and turnings with **GSR**, for a lower neckline at front.

Ensure to k sprout-sts on WS – not k tbl.

Turn garment inside out before working ribbing for back/front and sleeves,

NOTE: Change to new ball of yarn at beg of rnd, underarm or sides. Sweater is reversible and can be used both on RS and WS.

Yoke:

With double yarn and small 3.5 mm ndl cast on 104 sts. Join and work 3 cm ribbing k1, p1 in rnds.

Turn work and insert marker around 4 sts on rnd = markers for raglan inc as follows:

Insert marker around first st (= p st), count 37 sts (= the back), insert marker around next st, count 13 sts (= sleeve), insert marker around next st, count 37 sts, insert a marking thread (in contrast color) at each side of the 37 middle front sts (= front), insert marker around next st, 13 sts rem (= sleeve).

Rnd beg with marker and sts for the back, and p the 4 marked sts further.

Change to 4 mm circular ndl

Read following chapter before continue knitting

Work and turn with **GSR** for lower neckline at front (as explained), **at the same time** work **diagram** over sts for the back and sleeves, work **St-st** over sts for front and inc for raglan at each marker as shown in diagram as follows:

Work until 3 sts in on sts for front, turn, work until 3 sts in on sts for front at the other side, turn. Work and turn

in the same manner, but each time turn 1,2,3 sts pass previous turning, until a total of 4 turnings at each side, and end at marker for beg of rnd after last turning, and 3 raglan inc are finished = 128 sts on rnd.

Cont in rnds over all sts = 10th rnd in diagram = 136 sts.

Cont **diagram** over all sts, and inc for raglan as shown in diagram (20) 24 (24) 28 (32) 32 times = (264) 296 (296) 328 (360) 360 sts.

Cont **diagram** without inc until garment meas approx (21) 22 (23) 24 (25) 26 cm, meas from cast on and straight down with garment placed flat on table, end with 1 rnd sprout-st and 2 rnds St-st.

Divide work for sleeves, back and front as follows:

Work (79) 87 (87) 95 (103) 103 sts (= the back, including marked st at each side), transfer (53) 61 (61) 69 (77) 77 sts to spare ndl for sleeve, cast on (11) 11 (19) 19 (19) 27 new underarm sts, work (79) 87 (87) 95 (103) 103 sts (= front, including marked st at each side), transfer (53) 61 (61) 69 (77) 77 sts to spare ndl for sleeve, cast on (11) 11 (19) 19 (19) 27 new underarm sts.

Work each part separately.

Back and front:

= (180) 196 (212) 228 (244) 260 sts.

Cont **diagram** (without inc), and **at the same time** k3tog at middle underarm = (176) 192 (208) 224 (240) 256 sts.

Cont until sleeve meas (49) 50 (51) 52 (54) 56 cm, from cast on and straight down with garment placed flat on table, or 6 cm before suitable length, end with 1 rnd sprout-st and 2 or more rnds St-st.

Turn work inside out.

Change to 3.5 mm circular ndl and work 6 cm ribbing k1, p1 in rnds.

Cast off loosely rib-wise.

Sleeves:

Work sleeves with St-st side to RS of work.

With small 4 mm circular ndl knit up (11) 11 (19) 19 (19) 27 sts over the new underarm sts and work sts on spare ndl = (64) 72 (80) 88 (96) 104 sts on rnd.

Insert marker around middle underarm st.

Tips: Pick up yarn between sleeve sts and the new underarm sts and k this

new st tog with next st to avoid hole in garment.

Sprout pattern on RS of garment:

Cont **diagram** in rnds and k3tog at middle underarm = 2 sts dec.

Rep dec every (6) 4½ (3½) 3 (2½) 2 cm a total of (7) 9 (10) 13 (15) 18 times = (50) 54 (60) 62 (66) 68 sts.

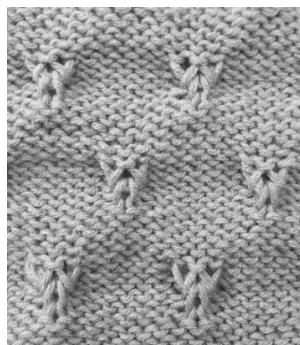
Cont until sleeve meas 42 cm, or 6 cm before suitable length, end with 1 rnd sprout-st and 2 or more rnds St-st. Turn sleeve inside out.

P 1 rnd, **while** dec (6) 6 (8) 10 (10) 12 sts evenly spaced (dec = p2tog) = (44) 48 (52) 52 (56) 56 sts.

Change to 3.5 mm double pointed ndls, and work 6 cm ribbing k1, p1 in rnds.

Cast off loosely rib-wise.

Work other sleeve in the same manner.



1.



2.



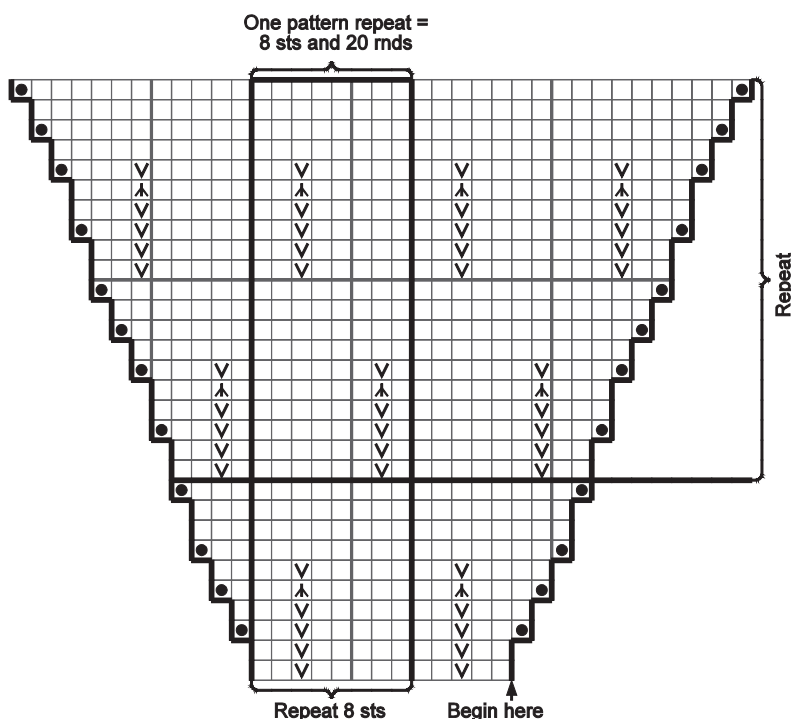
3.



4.



5.



□ k

◻ p

◻ Inc right after marker,
inc left before marker

NOTE: Se explanation in instruction

▲ SPROUT-ST

1st photo: Sl st off ndl and unravel
the 4 p sts from previous rnds,
and with cross threads in front of work

2nd photo: Transfer st
to left ndl in a k tbl manner.

3rd photo: Transfer cross threads
k-wise to left ndl

4th photo: Pass k st over cross threads

5th photo: P cross threads tog to 1 st

No 3

BONNET WITH RIDGES

Bonnet with ridge pattern
Instruction: Anita Brathetland

Sizes:

(0) 3 (6-9) mos 1 (2) yrs

Yarn:

SUNDAY (100% merino wool,
 50 g = 235 m)

Yarn required:

Lt.beige #3021/ Deep burgundy
 #4372/ Deep petrol #7272:
 1 ball all sizes

Suggested knitting needles:

Circular 3 mm

Needle sizes are only suggestions. If your
 knitting shows tighter tension, use thicker
 needles, for looser tension use thinner needle

Tension:

28 sts ridges with 3 mm ndls = 10 cm

1 ridge:

k 2 rows

With 3 mm circular ndl cast on (134)
 142 (154) 162 (170) sts and k 1 row.
 Insert marker around the (34th) 36th
 (39th) 41st (43rd) st from each side = 2
 markers.

Cont **ridges** back and forth and dec at
 each marker as follows:

Work until 1 st before marker, sl 2 (as
 working k2tog), k1, psso = 4 sts dec.

Rep dec on alt rows until (26) 26 (30)
 30 (34) sts rem.

Cast off.

Finishing:

Sew seam at back edge to edge.

Sew tog at top for hat to be placed in
 a flat position

Cord:

With 3 mm double pointed ndl cast on
 4 sts and work in this manner:

K 1 row, slide sts back to other side of
 ndl, hold yarn firmly and k the 4 sts.
 Cont in this manner and knit sts from
 the same side without turning.

Cont until cord meas approx (30) 31
 (32) 33 (34) cm.

Put cord aside and pick up (66) 70
 (76) 80 (84) sts at lower edge of

bonnet, and ensure middle back seam
 will rem at middle back of bonnet.
 Transfer sts for cord to same ndl as
 sts for edge of bonnet and knit cord to
 bonnet as follows: k3, k2tog tbl.

*Transfer 4 sts back to left ndl, k3,
 k2tog tbl*, rep from *-* until all sts for
 bonnet are worked and 4 sts rem.

Cont to work cord over the 4 rem sts
 until cord meas (30) 31 (32) 33 cm.

Cast off.

