



No 6

# ELGSETER CARDIGAN

Ladies cardigan

Instruction: Sandnes Garn

## Sizes:

(XS) S (M) L (XL) XXL

## Measurements:

Bust: (85) 93 (101) 108 (116) 124 cm  
Length: approx (58) 59 (60) 62 (63) 64 cm  
Sleeve length: 47 cm, or suitable length

All measurements are for the finished garment = personal body measurements + movement allowance. The measurements are all according to given tension

## Yarn:

PEER GYNT (100 % Norwegian wool, 50 g = 91 m)

## Alternative yarn:

ALPAKKA, SMART, DUO,  
MANDARIN MEDI, MERINOULL,  
SPØT

Note: If alternative yarn is chosen be sure to check the yardage on label. The image of garment might change by using alternative yarn.

## Yarn required:

Blue melange #6324: (9) 10 (11) 12 (13) 13 balls

Blue-grey melange #6072: (1) 1 (1) 50 (2) 2 balls

Burnt ochre #2544: 1 ball all sizes

Lilac #5002: 1 ball all sizes

## Notions:

(9) 9 (9) 10 (10) 10 buttons

## Suggested knitting needles:

Circular and double pointed 3.5 mm and 4 mm

Needle sizes are only suggestions. If your knitting shows tighter tension, use thicker needles, for looser tension use thinner needle.

## Tension:

20 sts St-st with 4 mm ndls = 10 cm

## Back and front:

With blue melange and 3.5 mm circ ndl cast on (165) 181 (197) 213 (229) 245 sts and work 6 cm ribbing k1, p1 back and forth.

Change to 4 mm circ ndl and cast on 5 new sts at end of row (= cutting sts. These sts are not included in pattern or given number of sts).

Insert marker at sides with (41) 45 (49) 53 (57) 61 sts for each front, and (83) 91 (99) 107 (115) 123 sts for the back.

Cont St-st until garment meas approx (39) 38 (38) 38 (40) 40 cm.

Cast off 8 sts at each side for armholes (= 4 sts at each side of markers).

Put garment aside and work sleeves.

## Sleeves:

With blue melange and 3.5 mm double pointed ndls cast on (40) 42 (44) 46 (48) 52 sts. Join and work 6 cm ribbing k1, p1 in rnds.

Change to 4 mm double pointed, k 1 rnd, **while** inc evenly spaced to (46) 48 (50) 52 (54) 58 sts. Insert marker on first and last st of rnd.

Cont St-st and when sleeve meas 8 cm inc 1 st at each side of marker. Rep inc every (5½) 4½ (4) 3 (3) 2½ cm until (60) 64 (68) 76 (80) 84 sts.

Cont until sleeve meas 47 cm, or suitable length.

Cast off 8 sts at center underarm (= marked sts + 3 sts at each side).

Put aside and work other sleeve the same.

## Raglan:

Transfer sleeve sts to the circular 4 mm garment ndl, placing one sleeve above each armhole cast-off = (253) 277 (301) 333 (357) 381 sts.

Rnd beg at center front.

Insert marker on last st of right front, one on last st of sleeve, one on first st of next sleeve, and one on first st of left front = 4 marked sts.

Work **diagram** and beg at arrow, **at the same time** dec for raglan on (4th) 4th (4th) 2nd (2nd) 2nd rnd at each marker as follows: Work until 1 st before marker, sl 2 k-wise (as working k2tog), k1, pss0 = 8 sts dec.

Rep dec on alt rnds (18) 19 (21) 22 (25) 26 times = (109) 125 (133) 157 (157) 173 sts.

Transfer the (19) 21 (23) 25 (27) 29 center front sts + cutting sts to spare ndl for neck.

Rnd beg at neck.

Cont back and forth and cast off 2 sts at beg of every row, **at the same time** cont raglan dec as before where possible 6 times more.

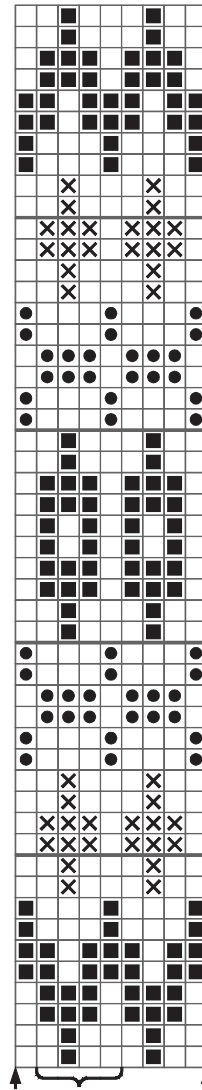
When diagram is finished cont with blue melange until full length.

## Finishing:

With machine sew 2 seams at each side of center front on cutting sts, and cut between seams.

Zigzag over cut edges.

**TIPS:** Work front bands and facings before cutting at center front.



End here Repeat Begin here

- Blue melange
- Blue grey melange
- ⊗ Burnt ochre
- Lilac

**Front band:**

Left front. With blue melange and 3.5 mm circ ndl pick up and knit 1 st every st/row, but skip every 4th st/row to approx. (111) 113 (115) 119 (121) 123 sts. Number of sts a multiple of 2+1.

Work approx 2½ cm ribbing back and forth as for garment.

Cast off rib-wise.

Work other side the same but with (9) 9 (9) 10 (10) 10 buttonholes evenly spaced. The lower approx 2 cm from edge, the upper at neckband. This is done later.

Buttonhole: k/p2tog, 1 yo.

**Neckband:**

Transfer sts from neck to 3.5 mm circ ndl and with blue melange knit up at neck edge approx 1 st every st/row, but skip every 4th st/row to approx (95) 97 (99) 103 (107) sts. Number of sts a multiple of 2+1.

Work approx 2½ cm ribbing back and forth as for garment. Remember last buttonhole.

Cast off rib-wise.

Sew buttons on.

**Facing:**

From WS, and with blue melange knit up 1 st every st on first row of front band. Work 4 rows St-st back and forth.

Cast off.

Fold facing over cut edge and sew with hidden sts.

Sew underarm openings.

