



No 4

FAIR ISLE  
SWEATER

Raglan sweater w/pattern  
Instruction: Anita Brathetland

**Sizes:**

(2) 4 (6) 8 (10) 12 yrs

**Measurements:**

Chest width: (64) 69 (73) 77 (81) 86 cm

Length: (36) 40 (44) 48 (50) 52 cm

Sleeve length: (24) 28 (31) 34 (37) 40 cm, or suitable length

All measurements are for the finished garment = personal body measurements + movement allowance. The measurements are all according to given tension.

**Yarn:**

SUNDAY (100% merino wool,  
50 g = 235 m)

**Yarn required:**

Putty #1015: (2) 2 (2) 3 (3) 4 balls  
Dk.grey-blue #6581: 1 ball all sizes  
Dusty lt.green #8521: 1 ball all sizes  
Lt.beige #3021: 1 ball all sizes  
Rust #3554: 1 ball all sizes  
Dk.sky blue #6042: 1 ball all sizes  
Straw yellow #2123: 1 ball all sizes  
Brown sugar #2543: 1 ball all sizes

**Suggested knitting needles:**

Circular and double pointed 2.5 mm and 3 mm

Needle sizes are only suggestions. If your knitting shows tighter tension, use thicker needles, for looser tension use thinner needle

**Tension:**

28 sts St-st with 3 mm ndls = 10 cm

**Sleeves:**

With putty and 2.5 mm double pointed ndls cast on (44) 46 (48) 50 (52) 52 sts. Join and work (3) 3 (3) 4 (4) 4 cm ribbing k1, p1 in rnds.

Change to 3 mm double pointed ndls, k 1 rnd, **while** inc (4) 2 (6) 4 (8) 8 sts evenly spaced = (48) 48 (54) 54 (60) 60 sts.

Insert marker around first st of rnd.

Cont **diagram** until sleeve meas 6 cm. Count from middle of sleeve to establish beg of diagram.

Inc 1 st at each side of marker.

Cont **diagram** and rep inc every (2) 1½ (2) 1½ (2) 2 cm until (66) 72 (78) 84 (90) 90 sts on rnd.

Cont until sleeve meas (24) 28 (31) 34 (37) 40 cm, or suitable length.

End with the rnd previous to round of putty only, and cast off 5 middle underarm sts (= marked st + 2 sts at each side).

Put aside and work other sleeve the same.

**Back and front:**

With putty and 2.5 mm circular ndl cast on (180) 192 (204) 216 (228) 240 sts. Join and work (3) 3 (3) 4 (4) 4 cm ribbing k1, p1 in rnds.

Change to 3 mm circular ndl.

Insert marker around 1 st at each side with (89) 95 (101) 107 (113) 119 sts between each marker

Cont **diagram** until garment meas approx (21) 23 (26) 28 (29) 31 cm, meas on sleeve where to start diagram for ending with the same rnd as sleeve

**NOTE:** Adjust length to start with a full pattern border.

Cast off 5 sts at each side for armholes (= marked st + 2 sts at each side).

**Raglan:**

Transfer sleeve sts to the circular 3 mm garment ndl, placing one sleeve above each armhole cast-off = (292) 316 (340) 364 (388) 400 sts.

Insert marker at each junction.

Beg rnd at a junction on the back.

Cont **diagram** and dec for raglan as follows: After each marker: k2tog. Before each marker: sl 1 k-wise, transfer the st k tbl back to left ndl and k2tog tbl = 8 sts dec.

Rep dec on alt rnds a total of (16) 17 (18) 19 (20) 20 times = (164) 180 (196) 212 (228) 240 sts on ndl.

**NOTE:** Ensure pattern borders to match as before.

Transfer the (13) 13 (15) 15 (17) 17 middle front sts for neck to spare ndl. Work to end of rnd, cut yarn and beg again at neck.

Cont **diagram** back and forth and cast off for neck at beg of every row at each side 2 sts (4)4(3)3(2)3 times, 1 st (4)5(7)8(10)10 times, **at the same time** cont raglan dec as before when possible (8) 9 (10) 11 (12) 13 times more, and a total of (24) 26 (28) 30 (32) 33 times over sts for the back.

**NOTE:** Dec for raglan on RS rows.

Leave rem sts on ndl for neckband.

**Finishing:**

Sew underarm openings.

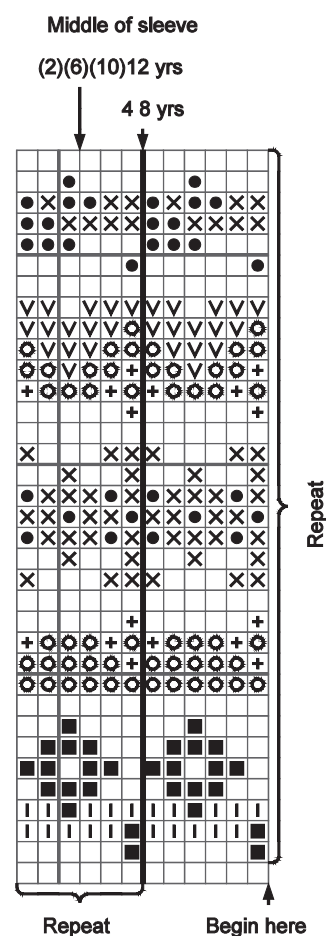
**Neckband:**

Transfer neck sts on ndl to 2.5 mm circular ndl and with putty knit up sts at neck edge at the same time.

Work 6 cm ribbing k1, p1 in rnds, **while** adjust number of sts to (104) 108 (112) 116 (120) 124 on first rnd.

Cast off rib-wise.

Fold neckband to WS and sew loosely with hidden sts.



- ☐ Putty
- ☒ Dk.grey-blue
- ☒ Dusty lt.green
- ☒ Lt.beige
- ☒ Rust
- ☒ Dk.sky blue
- ☒ Straw yellow
- ☒ Brown sugar



