



No 6

CLOVER
CARDIGAN

Cardigan w/eyelet pattern
Instruction: Olaug Beate Bjelland

Sizes:
(S) M (L-XL) XXL-XXXL

Measurements:
Bust: (104) 113 (121) 130 cm
Length: approx (78) 80 (83) 85 cm
Sleeve length: 44 cm, or suitable length

All measurements are for the finished garment = personal body measurements + movement allowance. The measurements are all according to given tension

Yarn:
BØRSTET ALPAKKA (96 % alpaca,
4 % nylon, 50 g = 110 m)

Yarn required:
Nude #3522/Natural #1012: (8) 9 (10)
11 balls

Suggested knitting needles:
Circular and double pointed 5 mm and 6 mm
Needle sizes are only suggestions. If your knitting shows tighter tension, use thicker needles, for looser tension use thinner needle.

Tension:
14 sts St-st with 6 mm ndls = 10 cm

Back and front:

With 5 mm circular ndl cast on (153) 165 (177) 189 sts, and work ribbing as follows:

Row 1: (= WS) sl first st k-wise tbl with yarn in front of work, *p1, k1*, rep from *-* to end of row.

Row 2: sl first st k-wise tbl with yarn in front of work,, *k1, p1*, rep from *-*, end with k2.

Rep row 1 – 2 until ribbing meas 7 cm.

Change to 6 mm circular.

Insert marker at sides with (40) 43 (46) 49 sts for each front and (73) 79 (85) 91 sts for the back.

Work **diagram** inside 7 front band sts at each side, and cont ribbing as before over these sts.

NOTE: Turn work before front band sts at each side approx every 12th row to avoid bands to bulge.

Cont until garment meas (49) 50 (52) 53 cm.

Work front band sts every row from here, and on RS dec for v-neck at each side as follows:

Work 7 front band sts, sl 1 k-wise, k1, pssso, work until 9 sts rem, k2tog, work 7 front band sts = 2 sts dec.

Rep dec when work meas (53) 54 (56) 56 cm.

Cont until garment meas (55) 57 (57) 59 cm.

Divide work at side markers for armholes and work each part separately.

Edge st: k every row

NOTE: When not enough sts for a full eyelet unit, work St-st instead.

Back:
= (73) 79 (85) 91 sts.
Work **diagram** inside 1 edge st at each side,
Cont in this order until armhole meas (18) 18 (21) 21 cm.

Shape and cast off for shoulder at beg of every row at each side 5 sts (5)3(0)0 times, 6 sts (0)2(5)3 times, 7 sts (0)0(0)2 times = (25) 27 (30) 32 sts cast-off at each side.

NOTE: End with a full eyelet unit in pattern

Cast off rem (23) 25 (25) 27 center sts for neck.

Fronts:

= (38) 41 (44) 47 sts.

Cont as before and rep v-neck dec every (3,5) 3,5 (3,5) 3 cm (6) 7 (7) 8 times more, **at the same time** shape and cast off for shoulder from armhole side at same length and in the same manner as the back.

Transfer rem 7 front band sts to spare ndl.

Work other front in the same manner but in a mirror image.

Sleeves:

With 5 mm double pointed ndls cast on (32) 32 (40) 40 sts. Join and work (7) 7 (8) 8 cm ribbing k1, p1 in rnds.

Change to 6 mm double pointed, k 1 rnd, **while** inc as follows:

work 2 sts, inc 1 (= pick up strand between 2 sts and k tbl this new st), rep from *-* in the rnd = (48) 48 (60) 60 sts.

Cont **diagram** in rnds until sleeve meas 44 cm, or suitable length, end with 2 or 3 rnds St-st after last eyelet in pattern border.

Cast off loosely.

Work other sleeve the same.

Finishing:

Sew shoulder seams with hidden sts to a nice and even seam.

Sew sleeves on.

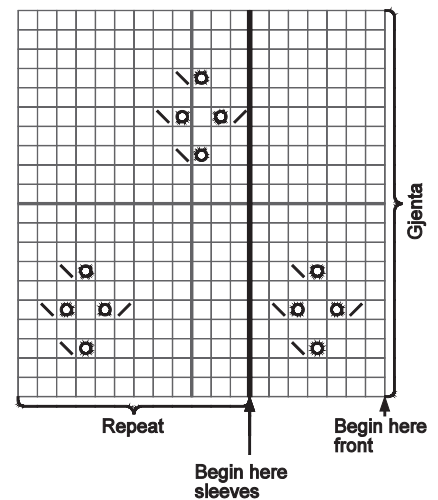
Neckband:

Transfer 7 front band sts to 5 mm ndl and cast on 1 new st at garment side = edge st. K edge st and work front band sts as before until band (slightly stretched) reaches center back neck. Cast off edge st and transfer the 7 rem sts to spare ndl.

Work the same on other side.

Place the 2 ndls tog with RS facing, and work 1 st from each ndl tog and **at the same time** cast off.

Sew band to neck edge inside edge st.



- k on RS, p on WS
- ⊙ 1 yo
- ⧏ k2tog
- ⧏ sl 1 k-wise, k1, pssso