



No 3

CLOVER SWEATER

Sweater w/eyelet pattern and round yoke

Instruction: Åsa Christiansen

Sizes:

(XS-S) M (L-XL)

Measurements:

Bust: (93) 107 (120) cm

Length: approx (60) 60 (61) cm, neckband included

Sleeve length: approx 46 cm

All measurements are for the finished garment = personal body measurements + movement allowance. The measurements are all according to given tension

Yarn:

BABYULL LANETT (100 % merino wool, 50 g = 175 m)

TYNN SILK MOHAIR (57 % mohair, 28 % silk, 15 % wool, 25 g = 212 m)

Yarn required:

BABYULL LANETT

White #1001: (6) 6 (7) balls

TYNN SILK MOHAIR

Natural #1012: (4) 5 (5) balls

Suggested knitting needles:

Circular and double pointed 4 mm and 4.5 mm

Needle sizes are only suggestions. If your knitting shows tighter tension, use thicker needles, for looser tension use thinner needle.

Tension:

18 sts pattern with double yarn and 4.5 mm ndls = 10 cm

Work garment with double yarn =

1 strand BABYULL LANETT +

1 strand TYNN SILK MOHAIR

Back and front:

With double yarn and 4 mm circular ndl cast on (186) 212 (238) sts. Join and work 2,5 cm ribbing k1, p1 in rnds.

Change to 4.5 mm circular, k 1 rnd, **while** dec evenly spaced (18) 20 (22) sts = (168) 192 (216) sts on rnd.

Insert marker at sides with (84) 96 (108) sts for each part.

Cont diagram **A** until work meas approx 30 cm, and cast off 12 sts at each side for armhole marked with

arrow in diagram **A** (= 6 sts at each side of markers). Yoke meas approx (23) 23 (24) cm + 7 cm ribbing. Put garment aside and work sleeves.

Sleeves:

With double yarn and 4 mm double pointed ndls cast on (34) 36 (38) sts. Join and work 7 cm ribbing k1, p1 in rnds.

Change to 4.5 mm double pointed, k 1 rnd, **while** inc (26) 24 (34) sts evenly spaced = (60) 60 (72) sts on rnd.

Cont diagram **A** until sleeve meas approx 46 cm.

Cast off 12 center underarm sts on the same pattern rnd as back and front.

Yoke:

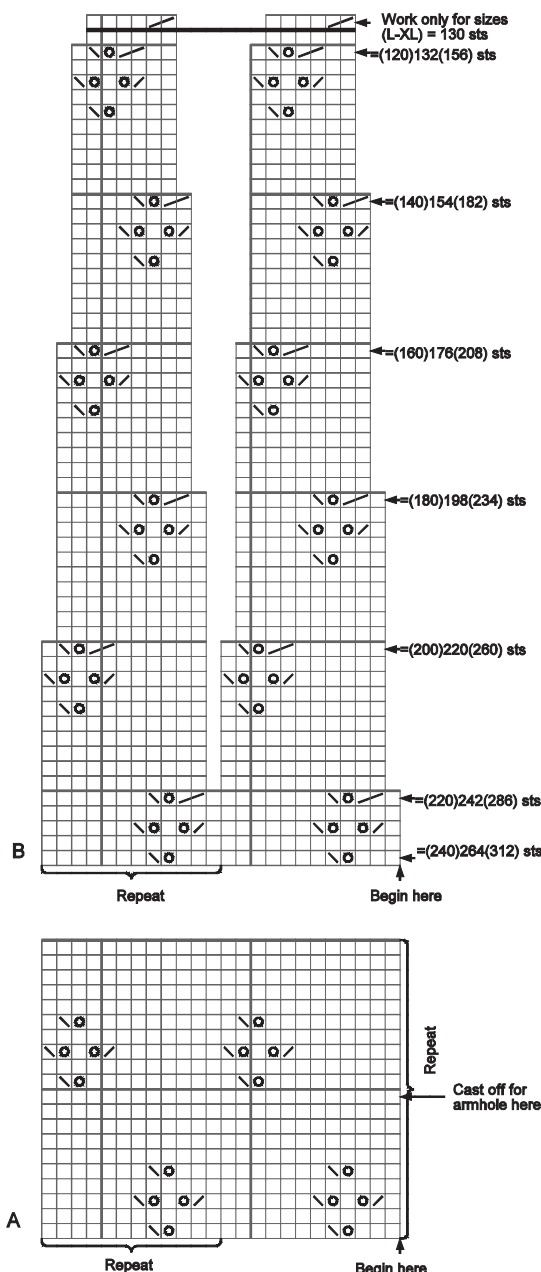
Transfer sleeve sts to the circular 4.5 mm garment ndl, placing one sleeve above each armhole cast-off = (240) 264 (312) sts.

Cont diagram **B** and dec as shown in diagram = (120) 132 (130) sts.

Insert marker on the (18) 20 (22) center front sts for neck.

Cut yarn and beg again at center back. Work extra length at back with short rows as follows:

- ☐ k on RS, p on WS
- ☒ 1 yo
- ☒ k2tog
- ☒ k2tog tbl
- ☒ k2tog



Work until neck sts, turn, sl 1 with yarn in front of work, lead yarn over right ndl and tighten firmly at the back until 2 loops on right ndl, work until neck sts at other side, turn, sl 1 with yarn in front of work, lead yarn over right ndl and tighten firmly at the back until 2 loops on right ndl.

Cont in the same manner and turn 3 sts before previous turning each time until 3 turnings at each side.

Work 1 rnd St-st over all sts **while** k tog the loops.

Change to 4 mm circular, k 1 rnd, **while** dec (12) 12 (10) sts evenly spaced = (108) 120 (120) sts.

Work 3,5 cm ribbing *k1, p2*, rep from *-* in the rnd.

Work *k1, p2tog*, rep from *-* in the rnd.

Cont 3.5 cm ribbing k1, p1 in rnds.

Cast off rib-wise

Finishing:

Sew underarm openings.