

Correction 1908

Nr 9

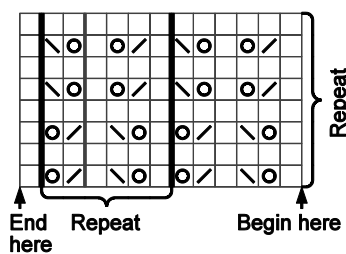
LACE TOP

Sleeve:

Cont St-st back and forth and cast off for sleeve cap at beg of every row at each side 3 sts (0)1(2)2(2) times, 2 sts (5)4(3)4(4) times (= (62) 64 (66) 66 (70) sts).

No 11

LACE SWEATER



- k on RS, p on WS
- 1 yo
- k2tog
- k2tog tbl