



No 10

FLOWERBEDS

Cardigan w/round yoke
Instruction: Anita Brathetland

Sizes:

(2) 4 (6) 8 (10) 12 yrs

Measurements:

Chest width: (64) 67 (70) 74 (79) 83 cm

Length: approx (35) 39 (42) 48 (51) 52 cm

Sleeve length: (25) 29 (32) 35 (38) 40 cm, or suitable length

All measurements are for the finished garment = personal body measurements + movement allowance. The measurements are all according to given tension

Yarn:

SISU (80 % wool, 20 % nylon,
50 g = 175 m)

Alternative yarn:

MINI ALPAKKA, MANDARIN PETIT,
ALPAKKA SILKE, TYNN
MERINOULL, BABYULL LANETT

Note: If alternative yarn is chosen be sure to check the yardage on label. The image of garment might change by using alternative yarn

Yarn required:

Lt.limestone #2319: (3) 4 (5) 6 (7) 8 balls

Orange #3326: 1 ball all sizes

Olive green #9544: 1 ball all sizes

Dusty petrol #7212: 1 ball all sizes

Dusty coral #4015: 1 ball all sizes

Corn yellow #2015: 1 ball all sizes

Notions:

(6) 6 (7) 7 (8) 8 buttons

Suggested knitting needles:

Circular and double pointed 2.5 mm and 3 mm

Needle sizes are only suggestions. If your knitting shows tighter tension, use thicker needles, for looser tension use thinner needle.

Tension:

27 sts St-st with 3 mm ndls = 10 cm

Edge st: k every row

Back and front:

With Lt.limestone and 2.5 mm circular ndl cast on (181) 191 (199) 213 (225) 239 sts and work (4) 4 (4) 5 (5) 5 cm ribbing back and forth as follows: (first

row = WS) 1 edge st, p1, *k1, p1*, rep from *-* end with 1 edge st.

Change to 3 mm circular.

Cast on 5 new sts at end of row (= cutting sts. These sts are not included in pattern or given number of sts).

Work 1 rnd St-st, **while** dec (16) 18 (18) 20 (20) 22 sts evenly spaced = (165) 173 (181) 193 (205) 217 sts.

Insert marker at sides with (40) 42 (44) 47 (50) 53 sts for each front and (85) 89 (93) 99 (105) 111 sts for the back.

Cont until work meas (22) 25 (28) 32 (35) 35 cm.

Cast off (8) 8 (8) 8 (10) 10 sts at each side for armholes (= (4) 4 (4) 4 (5) 5 sts at each side of markers).

Put garment aside and work sleeves.

Sleeves:

With Lt.limestone and 2.5 mm double pointed ndls cast on (44) 46 (48) 50 (52) 54 sts. Join and work (4) 4 (4) 5 (5) 5 cm ribbing k1, p1 in rnds.

Change to 3 mm ndls.

Insert marker on first and last st of rnd.

Cont St-st in rnds and when sleeve meas 6 cm inc 1 st at each side of marker. Rep inc every (2) 2 (2.) 2,5 (2,5) 2,5 cm until (62) 66 (70) 72 (78) 80 sts on rnd.

Cont until sleeve meas (25) 29 (32) 35 (38) 40 cm, or suitable length.

Cast off (8) 8 (8) 8 (10) 10 sts at center underarm (= marked sts + (3) 3 (3) 3 (4) 4 sts at each side).

Put aside and work other sleeve the same.

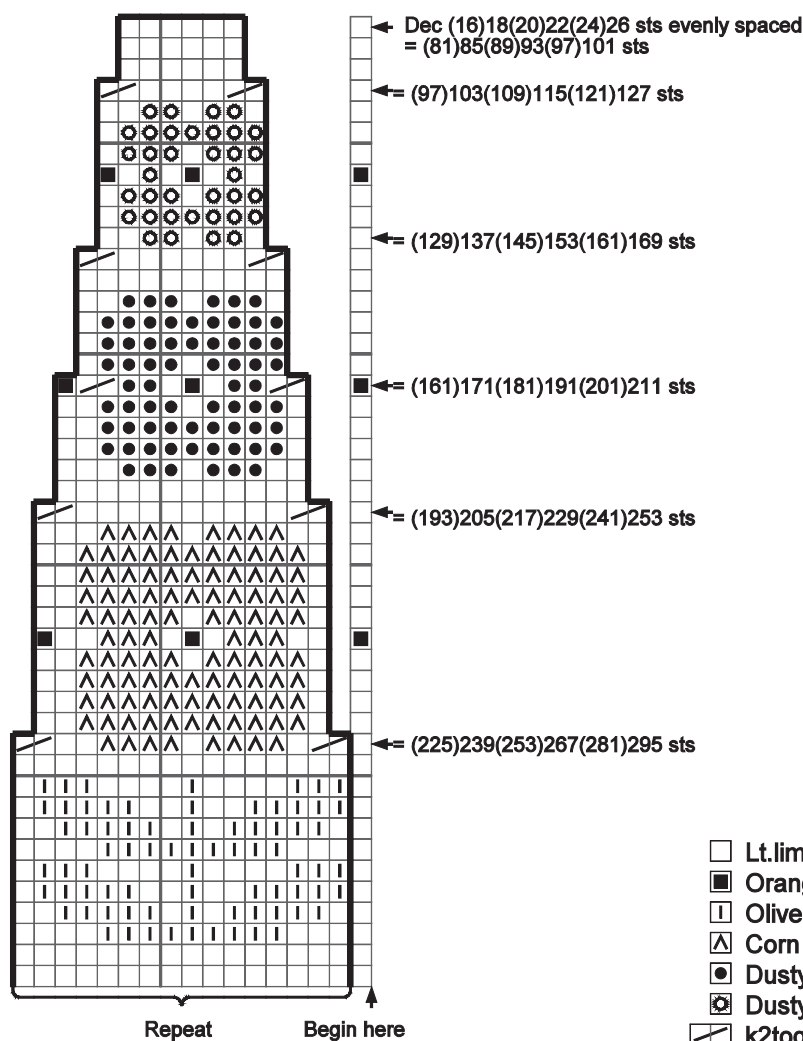
Yoke:

Transfer sleeve sts to the circular 3 mm garment ndl, placing one sleeve above each armhole cast-off = (257) 273 (289) 305 (321) 337 sts.

Work (0) 2 (4) 8 (10) 12 rnds St-st.

Work **diagram** and dec as shown = (81) 85 (89) 93 (97) 101 sts.

Cast off cutting sts and leave rem sts on ndl for neckband.



Finishing:

With machine sew 2 seams at each side of center on cutting sts. Cut between seams.

Zigzag cut edges.

TIPS: Work front bands and facings before cutting.

Left front band girl/right boy: With lt.limestone and 2.5 mm circular ndl knit up 1 st every st/row, but skip every 4th st/row at front edge to approx (93) 103 (113) 123 (129) 133 sts.

Number of sts a multiple of 2+1.

Work 3 cm ribbing as for back and front.

Cast off rib-wise.

Right front band girl/left boy:

Work as other side but with (6) 6 (7) 7 (8) 8 button holes evenly spaced when band meas 1,5 cm.

The lower approx 2 cm from cast on edge, the upper in neckband. This is done later.

Buttonhole: Cast off 2 sts. Next row: Cast on 2 sts above the cast-off.

Facing:

From WS, with lt.limestone and 2.5 mm circular ndl knit up 1 st in every st on first row of front band. Work 5 rows St-st back and forth.

Cast off.

Fold facing over cut edge and sew loosely with hidden sts.

Work the same on other side.

Neckband:

Transfer sts to 2.5 mm circ ndl and at the same time with lt.limestone knit up 6 sts at each front band = (93) 97 (101) 105 (109) 113 sts.

Work 3 cm ribbing as for back and front. Remember last button hole

Cast off rib-wise

Sew tog underarm openings

Sew buttons on

